

WOOD HEATING COLLECTION

CLEAN AIR
WOODHEATERS



AUSTRALIAN OWNED & OPERATED



MADE FOR AUSTRALIA

KEEP YOUR FAMILY CÖSY IN THE COLDER MONTHS WITH THE WARMTH AND TIMELESS CHARM OF A WOOD FIRE ▼

Clean Air wood heaters have been designed and developed in Australia, Inspired by international trends and technologies. With Australian Design, German glass, Danish firebox lining and American coatings, Clean Air are a genuine global wood heater. Our low emissions and high efficiencies simply mean that a Clean Air wood heater is the perfect choice when looking for a quality wood heater to warm your home this winter.

- ▶ Heat exchange activation tubes run through the firebox to help extract more heat from the fire. Not seen on any other wood heaters.
- ▶ Double Glazed curved front door keeps the internal glass temperature higher during operation thus reducing any build-up of creosote.
- ▶ Natural Convection design allows the hot air to naturally circulate around the firebox and into the room.
- ▶ State of the art firebox design gives extremely long burn times when on low setting



- ▶ Radio frequency (RF) remote controlled 3 speed fan allows you to control the amount of air heat circulated from your armchair.
- ▶ Side viewing glass allows the fire to be viewed from a 180° radius. The German made Infra-Red glass reflects 40% of the heat back into the fire helping increase efficiencies.
- ▶ Removable handle provides extra safety as handles can get hot to touch. Also maintains the sleek minimalistic look of the heater.
- ▶ Skamolex™ from Denmark is used to line the firebox. It pushes the heat back into the fire, making it cleaner burning.

15 YEAR STRUCTURAL FIREBOX WARRANTY

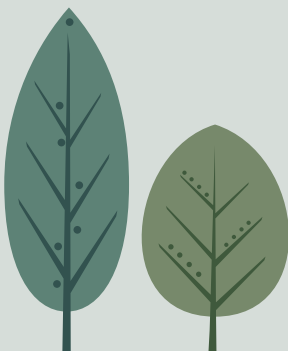
Every Clean Air wood heater comes with a 15 year firebox structural warranty. Each heater is crafted with quality materials and unrivalled construction for ultimate performance winter after winter.

ENVIRONMENT ▼

The range of Clean Air wood heaters are designed to burn hardwood and are tested to the most stringent of world standards. The current joint Australian and New Zealand Standards 4013/4012 measure particulate emissions and efficiency and we are proud to say our heaters significantly exceed the requirements of these Standards.

When you purchase a Clean Air wood heater for your home it will not only give you a modern, clean burning, highly efficient method of keeping your home warm throughout winter you are also making a choice to support Landcare Australia. Clean Air wood heaters have been a member of the Australian Home Heating Association for over 25 years, and their membership fees in turn support Landcare, who work towards restoring the environment and protecting its long-term viability.

Wood, as a form of natural energy, is the only sustainable and renewable fuel source for heat generation. Wood burning in a Clean Air wood heater does not add to the greenhouse effect. If wood is left to naturally decay, consumed in a bush fire or burnt in a wood heater, it emits similar levels of CO₂.





**15 YEAR
STRUCTURAL
FIREBOX
WARRANTY**

SMALL INSERT ▼

CAISS19MB

- Coverage:** 180m²
- Peak Heat Output:** 9.6 kW
- Burn Time:** up to 7 hours
- Maximum Log Size:** 340mm
- Construction:** 6mm steel firebox with Skamolex™ lining
- Firebox Volume:** 0.05m³
- Baffle:** 25mm Skamolex baffle
- Fan:** 3 speed remote controlled fan
- Recommended Hearth:**
Maxiheat Insert Hearth (MXTHINSBLK/GRY)

BurnWise An initiative of the Australian Home Heating Association		
EFFICIENCY	This model	66%
	Australian Standard	>60%
PARTICLE EMISSIONS	This model	1.0g/kg
	Australian Standard	<1.5g/kg

MEDIUM INSERT ▼

CAISM19MB

- Coverage:** 280m²
- Peak Heat Output:** 12.5 kW
- Burn Time:** up to 9 hours
- Maximum Log Size:** 390mm
- Construction:** 6mm steel firebox with Skamolex™ lining
- Firebox Volume:** 0.07m³
- Baffle:** 25mm Skamolex baffle
- Fan:** 3 speed remote controlled fan
- Recommended Hearth:**
Maxiheat Insert Hearth (MXTHINSBLK/GRY)

BurnWise An initiative of the Australian Home Heating Association		
EFFICIENCY	This model	66%
	Australian Standard	>60%
PARTICLE EMISSIONS	This model	0.8g/kg
	Australian Standard	<1.5g/kg

LARGE INSERT ▼

CAISL19MB

- Coverage:** 330m²
- Peak Heat Output:** 15.9 kW
- Burn Time:** up to 10 hours
- Maximum Log Size:** 420mm
- Construction:** 6mm steel firebox with Skamolex™ lining
- Firebox Volume:** 0.1m³
- Baffle:** 25mm Skamolex baffle
- Fan:** 3 speed remote controlled fan
- Recommended Hearth:**
Maxiheat Insert Hearth (MXTHINSBLK/GRY)

BurnWise An initiative of the Australian Home Heating Association		
EFFICIENCY	This model	62%
	Australian Standard	>60%
PARTICLE EMISSIONS	This model	0.7g/kg
	Australian Standard	<1.5g/kg

* All Clean Air heaters come in a high temperature Metallic Black finish

LONG
BURN
TIMES
FOR A
WARMER
WINTER

15 YEAR
STRUCTURAL
FIREBOX
WARRANTY



SMALL CONSOLE ▾

CACS19MB

815H x 709W x 592D mm

Coverage: Up to 200m²

Peak Heat Output: 12kW

Burn Time: up to 8 hours

Maximum Log Size: 340mm

Construction: 6mm steel firebox with Skamolex™ lining

Firebox Volume: 0.05m³

Baffle: 25mm Skamolex baffle

Fan: 3 speed remote controlled fan

Recommended Hearth:

Maxiheat 1m Tiled Hearth (MXTH1BLK2/GRY)



BurnWise <small>An initiative of the Australian Home Heating Association</small>		
EFFICIENCY	This model	72%
	Australian Standard	>60%
PARTICLE EMISSIONS	This model	0.95g/kg
	Australian Standard	<1.5g/kg

MEDIUM CONSOLE

CACM19MB

865H x 759W x 615D mm

Coverage: Up to 300m²

Peak Heat Output: 14.2kW

Burn Time: up to 10 hours

Maximum Log Size: 390mm

Construction: 6mm steel firebox with Skamolex™ lining

Firebox Volume: 0.07m³

Baffle: 25mm Skamolex baffle

Fan: 3 speed remote controlled fan

Recommended Hearth:

Maxiheat Tiled Hearth (MXTH12BLK2/GRY)



BurnWise <small>An initiative of the Australian Home Heating Association</small>		
EFFICIENCY	This model	70%
	Australian Standard	>60%
PARTICLE EMISSIONS	This model	0.85g/kg
	Australian Standard	<1.5g/kg

LARGE CONSOLE ▾

CACL19MB

915H x 859W x 700D mm

Coverage: Up to 350m²

Peak Heat Output: 19.2kW

Burn Time: up to 12 hours

Maximum Log Size: 420mm

Construction: 6mm steel firebox with Skamolex™ lining

Firebox Volume: 0.1m³

Baffle: 25mm Skamolex baffle

Fan: 3 speed remote controlled fan

Recommended Hearth:

Maxiheat Full Slab Hearth (MXFSH12DBLK)



BurnWise <small>An initiative of the Australian Home Heating Association</small>		
EFFICIENCY	This model	70%
	Australian Standard	>60%
PARTICLE EMISSIONS	This model	0.76g/kg
	Australian Standard	<1.5g/kg

* All Clean Air heaters come in a high temperature Metallic Black finish

The traditional and refined look of the Heritage surround is designed to fit behind the Clean Air insert heater making it suitable for older style fireplaces.



15 YEAR
STRUCTURAL
FIREBOX
WARRANTY

Clean Air's range of insert wood heaters can also be installed into timber stud wall or cabinet provided they are fitted with a Maxiheat Zero Clearance Box and flue kit (MXZEROBOX + MXFK3Z).

Making Clean Air inserts an ideal heating solution for any new home builder or renovator who is looking for the warmth, comfort and ambiance of an insert wood heater but doesn't have or want a masonry/brick fireplace.

*Medium and Large available with a Metallic Black Heritage surround, as pictured. Mantle not supplied.

MEDIUM HERITAGE INSERT ▼

CAISM19MB + CAHSHMM

Coverage: Up to 280m²

Peak Heat Output: 12.5 kW

Burn Time: up to 9 hours

Maximum Log Size: 390mm

Construction: 6mm steel firebox with Skamolex™ lining

Firebox: 0.07m³

Baffle: 25mm Skamolex baffle

Fan: 3 speed remote controlled fan

Recommended Hearth:

Maxiheat Insert Hearth (MXTHINSBLK/GRY)

BurnWise <small>An initiative of the Australian Home Heating Association</small>		
EFFICIENCY	This model	66%
	Australian Standard	>60%
PARTICLE EMISSIONS	This model	0.8g/kg
	Australian Standard	<1.5g/kg

LARGE HERITAGE INSERT ▼

CAISL19MB + CAHSHML

Coverage: Up to 330m²

Peak Heat Output: 15.9 kW

Burn Time: up to 10 hours

Maximum Log Size: 420mm

Construction: 6mm steel firebox with Skamolex™ lining

Firebox Volume: 0.1m³

Baffle: 25mm Skamolex baffle

Fan: 3 speed remote controlled fan

Recommended Hearth:

Maxiheat Insert Hearth (MXTHINSBLK/GRY)

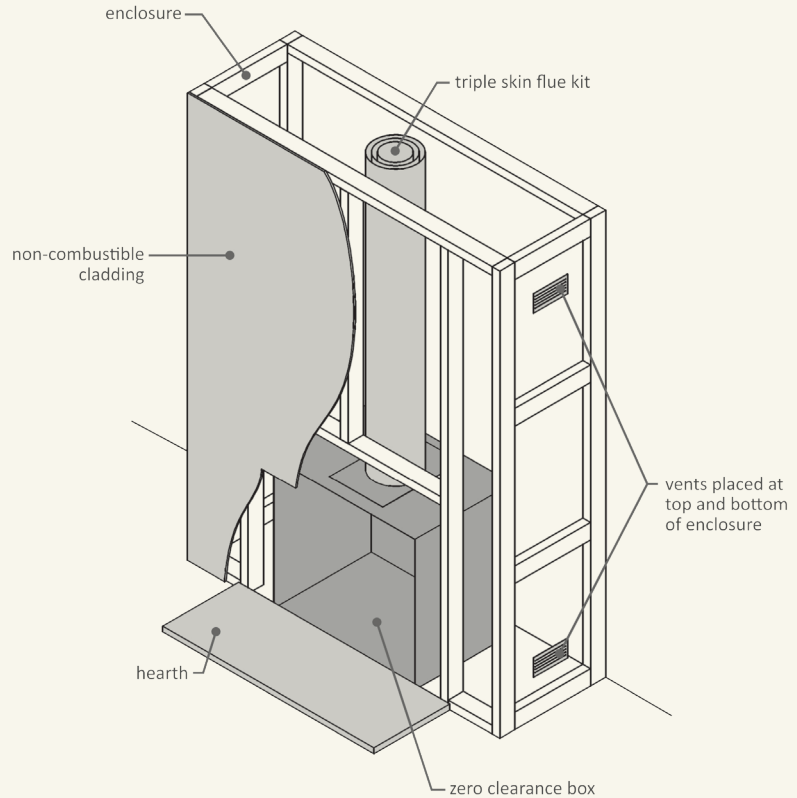
BurnWise <small>An initiative of the Australian Home Heating Association</small>		
EFFICIENCY	This model	62%
	Australian Standard	>60%
PARTICLE EMISSIONS	This model	0.7g/kg
	Australian Standard	<1.5g/kg

ZERO CLEARANCE INSTALLATION

Transform a dull blank wall into a magnificent fireplace with our Zero Clearance models. Most importantly, no major structural alterations or existing chimney is required.

Refer to instruction manual or website (www.cleanairwoodheaters.com.au) for additional information, including minimum clearances and hearth specifications.

*drawing is a guide only



SPECIFICATIONS

	CABINET (mm)	FASCIA (mm)	APPROX HEAT CAPACITY	RECOMMENDED HEARTH (mm)	TOP OF HEATER FASCIA TO MANTLE (mm)	SIDE OF HEATER FASCIA TO MANTLE COLUMN (mm)
STANDARD INSERTS						
SMALL	546 (H) x 608 (W) x 447 (D)	596 (H) x 750 (W)	180m ²	600(D) x 1200(W) x 56 THICK INCLUDING A 15MM AIR GAP (MXTHINSBLK/GRY or equivalent)	550	50
ZERO CLEARANCE	817 (H) x 838 (W) x 578 (D)					
DISTANCE FROM REAR OF FASCIA TO CENTRE FLUE 268mm						
MEDIUM	596 (H) x 658 (W) x 487 (D)	646 (H) x 800 (W)	280m ²	600(D) x 1200(W) x 56 THICK INCLUDING A 15MM AIR GAP (MXTHINSBLK/GRY or equivalent)	550	50
ZERO CLEARANCE	817 (H) x 838 (W) x 578 (D)					
DISTANCE FROM REAR OF FASCIA TO CENTRE FLUE 308mm						
LARGE	646 (H) x 758 (W) x 527 (D)	696 (H) x 900 (W)	330m ²	600(D) x 1200(W) x 56 THICK INCLUDING A 15MM AIR GAP (MXTHINSBLK/GRY or equivalent)	550	50
ZERO CLEARANCE	817 (H) x 838 (W) x 578 (D)					
DISTANCE FROM REAR OF FASCIA TO CENTRE FLUE 348mm						
HERITAGE INSERTS						
MEDIUM	546 (H) x 608 (W) x 447 (D)	765 (H) x 935 (W)	280m ²	600(D) x 1200(W) x 56 THICK INCLUDING A 15MM AIR GAP (MXTHINSBLK/GRY or equivalent)	550	50
ZERO CLEARANCE	817 (H) x 838 (W) x 578 (D)					
DISTANCE FROM REAR OF FASCIA TO CENTRE FLUE 308mm						
LARGE	646 (H) x 758 (W) x 527 (D)	815 (H) x 1035 (W)	330m ²	600(D) x 1200(W) x 56 THICK INCLUDING A 15MM AIR GAP (MXTHINSBLK/GRY or equivalent)	550	50
ZERO CLEARANCE	817 (H) x 838 (W) x 578 (D)					
DISTANCE FROM REAR OF FASCIA TO CENTRE FLUE 348mm						



	FLUE KIT	REAR WALL (mm)	SIDE WALL (mm)	CORNERS (mm)	HEARTH FRONT (mm)	HEARTH MINIMUM DIMENSIONS		REAR TO CENTRE FLUE (mm)
						WIDTH (mm)	DEPTH (mm)	
FREESTANDING		A	B	C	D	E	F	G
SMALL CONSOLE	Maxiheat Decromesh Default Flue Kit with inner shield	100	450	100	300	922	992	215
	Maxiheat Non-Perforated flue kit with inner shield							
OVERALL HEATER SIZE (mm): 815 (H) x 709 (W) x 592 (D)					APPROX. HEAT CAPACITY: 200m ²			
MEDIUM CONSOLE	Maxiheat Decromesh Default Flue Kit with inner and outer shields	150	550	200	300	971	995	231
	Maxiheat Non-Perforated flue kit with inner shield and outer shields							
OVERALL HEATER SIZE (mm): 865 (H) x 759 (W) x 615 (D)					APPROX. HEAT CAPACITY: 300m ²			
LARGE CONSOLE	Maxiheat Decromesh Default Flue Kit with inner and outer shields	250	650	225	300	1071	1180	240
	Maxiheat Non-Perforated flue kit with inner shield and outer shields							
OVERALL HEATER SIZE (mm): 915 (H) x 859 (W) x 700 (D)					APPROX. HEAT CAPACITY: 350m ²			

With all freestanding and inbuilt heaters, it is imperative to use a non-combustible hearth to protect your flooring and its surrounding area.

Refer to instruction manual or website (www.cleanairwoodheaters.com.au) for additional information, including minimum clearances and hearth specifications.

Standard Installation

Corner Installation

YOUR AUTHORISED CLEAN AIR DEALER



**15 YEAR
STRUCTURAL
FIREBOX
WARRANTY**



Clean Air wood heaters proudly support the activities of Landcare Australia through its membership of the AHHA



GLG Australia PTY LTD – Building A2, Campus Business Park, 350-374 Parramatta Rd Homebush NSW 2140.
www.cleanairwoodheaters.com.au P: 02 9735 4100

Refer to Instruction manual for installation specifications such as clearances to combustible materials and hearth construction. Peak heat output and burn times may vary depending on fuel type, moisture content and loading. Clean Air wood heaters have been tested with Maxiheat flue systems and comply with the MOST RECENT Australian Standards AS/NZS2918. Heating output may vary depending on climate conditions and house design. Details provided in this brochure regarding the installation of a Zero Clearance System are for information purposes only and should not be relied upon as full installation instructions. Heating capacities may vary according to firewood species and moisture content; climatic conditions and home construction; individual room or home dimension; and installation levels. The manufacturer reserves the right to alter design and specifications at anytime.