



BEYOND fire



www.osburn-australia.com

**BEYOND
EXPECTATIONS**

High quality and unique design for your comfort

BEYOND fire

BEYOND... A single word that captures our philosophy and commitment at Osburn. This is our source of inspiration.

What does "BEYOND" mean to Osburn?

BEYOND drives us forward when we look at products. We go beyond with what we do and with our interactions in life. It is more than building and selling products. It's no longer about just doing, but doing with a purpose, doing efficiently. It is about exceeding expectations. BEYOND... drives us to do better, to be more functional and achieve higher performance. We believe great products define a great appliance manufacturer. We are not afraid to take the lead or to stretch the boundaries. When you go BEYOND... you simply go ahead; you look at the present and envision amazing things happening for the future. That's who we are, our philosophy. Our hope is to share it with you and we invite you to take the time to discover how we go beyond.

The Osburn Team



OSBURN HEATING CONTENTS

Freestanding Wood Fires

900	4
1000	5
SOHO	6
2000	7
2300	8
Inspire	9

Insert Wood Fires

Stratford	10
Inspire-I	11

Technical data, Features and clearances	12
---	----

Wood heating and the environment	16
----------------------------------	----

Osburn warranty, limited 10 years	18
-----------------------------------	----



Model: 2300



900

Osburn 900 pictured with black cast iron legs.
A pedestal is not an option with this model

Emissions
1.4g/kg

Overall efficiency
63%

BEYOND SIZE

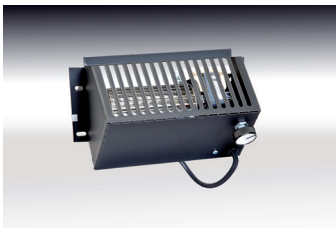
Osburn is proud to present its 900 wood fire model, the smallest wood fire in the Osburn line that packs a lot of heat with style! The 900 incorporates the same features and technology of the larger Osburn models. This sturdy little heater will keep you warm and toasty, and will heat up to 120m². An optional fan is also available for an extra boost. In spite of its size, the Osburn 900 takes an adequate log length of 43cm, making it an admired option in the small stove market.



Optional: Fire screen

Firebox dimensions:
24cm H
47cm W
32cm D

Exterior dimensions:
65cm H
58cm W
56cm D



Optional: Fan with
variable speed control*

Maximum log length:
43cm



Optional: Fresh air intake kit

Fresh air intake kit allows the fire to burn oxygen sourced from outside the home rather than in it. Will also assist combustion in modern air tight homes.

Please note piping for fresh air intake is not included.**

*See the complete technical data on page 14.

**See note 1 on page 15.



1000

Osburn 1000 pictured with brushed nickel plated door overlay and pedestal.

Emissions
1.5g/kg

Overall efficiency
66%

BEYOND FLEXIBILITY

The Osburn 1000 is the perfect way to effectively heat small areas. This device has all the technical features you need in a high efficiency wood fire. It offers many of the standard and optional features of the other Osburn models, such as pedestal or legs, covered ash drawer, and powerful fan. Overall, this versatile and compact wood fire gives an impressive performance and is an excellent choice for the discerning buyer.



Required accessory:
Cast iron door overlay
painted black or
brushed nickel plated

Firebox dimensions:
35cm H
43cm W
31cm D

Maximum log length:
41cm



Required accessory
Option 1:
Cast iron legs
painted black

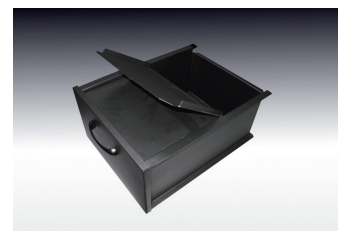
Exterior dimensions
on legs:
78cm H
61cm W
60cm D



Ash pan



Required
accessory
Option 2:
Pedestal and
ash drawer with
safety lid



Ash drawer with safety lid



Optional: Fan with variable speed control

*See the complete technical data on page 14.



Red model

SOHO

Soho wood stacker with ash drawer and black or red enameled decorative side panels.

Emissions
1.2g/kg

Overall efficiency
60%

BEYOND CONTEMPORARY DESIGN

Once again, Osburn innovates to offer you the Soho range, small wood stoves with an ultra modern design. This stove features an exceptional wood fire view with an easy-to-operate door latch system that compliments the clean lines of the appliance. With two pedestal options – Soho Wood Stacker and Soho Twin Stacker – it also offers optional side panels in different finishes and a convenient space to store your logs. The Soho range can also be equipped with an optional blower and thermodisc, and it does not require any adaptor for fresh air connection.



Soho Wood Stacker
Wood stacker pedestal and ash drawer

Dimensions
83.4cm H
65.4cm W
51.1cm D



Soho Twin Stacker
Twin stacker pedestal and ash drawer

Dimensions
83.6cm H
72.3cm W
51.1cm D

Required accessory:
Decorative side panels
(black or red enameled)



Optional: 130 CFM fan

*See the complete technical data on page 14.
**See note 1 on page 15.



2000

Osburn 2000 pictured with brushed nickel plated door overlay and pedestal.

Emissions
1.1g/kg

Overall efficiency
64%

BEYOND CHARM

The Osburn 2000 models cast iron door features the distinctive lines you've come to expect from Osburn, giving it a look combining the contemporary and the traditional. The Osburn 2000 will delight the most serious of wood fire enthusiasts who want both style and heating power. Its variable speed fan and optional cast-iron legs make the Osburn 2000 one of the most sought-after models of the season!



Required accessory:
Cast iron door overlay
painted black or brushed
nickel plated option

Firebox dimensions:
30cm H
53cm W
42cm D

Maximum log length:
51cm



Required accessory:
Cast iron legs painted
black or brushed
nickel plated

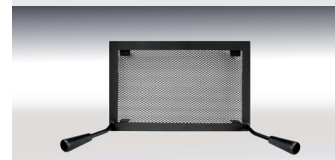
Exterior dimensions:
88cm H
69cm W
76cm D



Ash pan



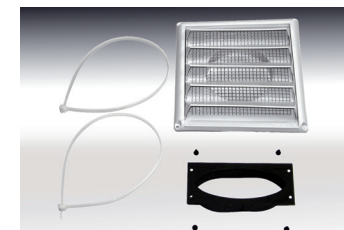
Fan with
variable
speed control
included



Optional:
Fire screen



Ash drawer
with safety lid



Optional: Fresh air intake kit

Fresh air intake kit allows the fire to burn oxygen sourced from outside the home rather than in it. Will also assist combustion in modern air tight homes.

Please note piping for fresh air intake is not included.**

*See the complete technical data on page 15.

**See note 1 on page 15.



2300

Osburn 2300 pictured with brushed nickel plated door overlay and decorative louver and trivet.

Emissions
1.3g/kg

Overall efficiency
61%

BEYOND SOPHISTICATION

The 2300 model is one of our new-generation wood stoves. Straight from the drawing board to you, its backed by the advanced Solid-Edge technology and a 3-D software design program. It features an aesthetically pleasing cast iron door complete with signature Osburn logo, hidden latch and hinges as well as an extra-large glass window. Each appliance is equipped with a premium quality blower. The secondary air tubes and baffle ensure combustion of the highest quality.



Required accessory:
Cast iron door overlay
painted black or
brushed nickel plated

Firebox dimensions:
38cm H
47cm W
54cm D

Maximum log length:
51cm



Required accessory:
Cast iron legs painted
black or brushed nickel

Exterior dimensions
on legs:
85cm H
65cm W
88cm D



Ash pan



Ash drawer with safety lid

Required accessory:
Pedestal and ash
drawer with safety lid



Required accessory: Fan with
variable speed control

*See the complete technical data on page 15.



INSPIRE

Inspire pictured with soapstone base.

Emissions
1.1g/kg

Overall efficiency
64%

BEYOND CONTEMPORARY

The Inspire offers a style that will surely withstand variable trends with these pure lines of balanced proportions, allowing the brand Osburn to easily compare to European-style products. This more contemporary look is available on steel base, soapstone or even a minimalist base for those who prefer to place the unit directly on a non-combustible podium. Equipped with a 2.3 cubic feet firebox and an outside air intake, this unit will meet the requirements of all energy standards. The Inspire meets EPA requirements with emissions as low as 1.1 g/kg and complies with all Australian Standards. A guarantee of quality, reliability and durability, once again Osburn clearly demonstrates its firm commitment to the environment to the delight of the wood heating community.



Required accessory: Metal base with black side panel kit.

Firebox dimensions:
31cm H
53cm W
42cm D

Maximum log length:
51cm



Required accessory: Minimalist base with black sidepanel kit.

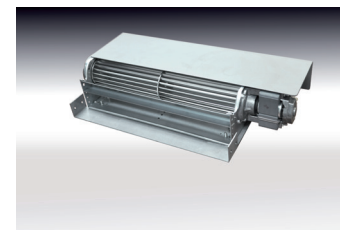
Exterior dimensions:
64cm H
76cm W
65cm D



Optional: Fresh air intake kit

Fresh air intake kit allows the fire to burn oxygen sourced from outside the home rather than in it. Will also assist combustion in modern air tight homes.

Please note piping for fresh air intake is not included.**



Fan with variable speed control and quick connect thermdisc included for heat activation.

*See the complete technical data on page 15.

**See note 1 on page 15



STRATFORD

Stratford CF ZC Wood Fireplace

Emissions
0.9g/kg

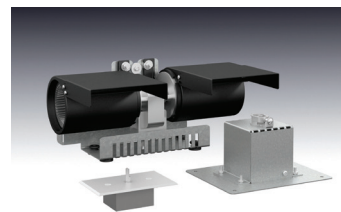
Overall efficiency
69%

BEYOND CHARACTER



Transfer kit linear grill

With its straight lines, simplistic shape and neutral color, the Stratford CF brings a gust of modernism into your home. It harmonizes both functionality and comfort perfectly. Moreover, the Stratford CF's extra large clean face glass offers a view of the fire that is unmatched in the industry. The modern style hot air gravity kit will help you harness all the power from this incredible fireplace, while keeping in mind the contemporary lines of your décor. The most serious of users will also want to install the forced air kit which will allow for better and more efficient heat transfers to a room further from the zero clearance wood inbuilt.



Optional: Fan (distribution kit)
Model: AC01387



Optional Fire screen
Model: AC01364



Optional: Black metallic finishing
Trim Model: VA10FL02

*See the complete technical data on page 16.

**See note 1 on page 16.



Interior design concept only. Refer to instruction manual for clearance restrictions.

INSPIRE-I

Inspire-I Wood Fireplace

Emissions
0.8g/kg

Overall efficiency
61%

BEYOND ELEGANCE



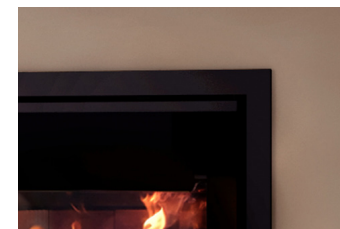
85m³/h blower is included

This timeless wood inbuilt fireplace gives life to any living space with its streamline metallic black aesthetics. Featuring an 85m³/h premium quality blower and the versatility of a zero clearance option makes the Osburn Inspire-I a fireplace that impresses.

Perfect for any occasion, whether it is to admire the flames in the comfort of your living room during a romantic evening or to enjoy its impressive heat output in the coldest of times, this appliance will charm you.



Optional: Zero clearance kit



Optional: Black metallic finishing
Trim Model: AC01020

*See the complete technical data on page 16.

Technical data: Freestanding Wood Fires



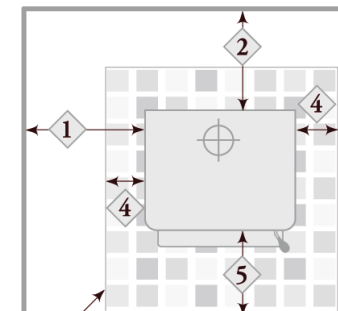
GENERAL FEATURES

MODEL	900	1000	SOHO Wood stacker	SOHO Twin stacker
Colour	Metallic Black	Metallic Black	Metallic Black	Metallic Black
Combustion technology	Non-catalytic	Non-catalytic	Non-catalytic	Non-catalytic
Approximate heating capacity (Note1)	120m ²	150m ²	160m ²	160m ²
Overall average efficiency (hardwood)	63%	66%	60%	60%
Door opening size - mm - (W x H)	381 x 193	397 x 213	413 x 208	413 x 208
Firebox dimensions - mm - (W x H x D)	467 x 244 x 318	425 x 351 x 306	460 x 310 x 343	460 x 310 x 343
Emissions : weighted average, in g/kg	1.4g /kg	1.5g/kg	1.2g/kg	1.2g/kg
Glass viewing area - mm - (W x H)	338 x 195	380 x 212	400 x 184	400 x 184
Door frame	Cast iron	Cast iron	Cast iron	Cast iron
Maximum log length - cm	43	41	43	43
Ash drawer with safety lid	No	Yes	Yes	Yes
Flue size	152mm / 6"			
Glass type	Ceramic glass			
Adjustable handle	Yes			
Self-cleaning glass system	Yes			
Warranty	Limited 10 years			
Safety, emissions and efficiency testing	According to AS/NZS 4013:2019 and AS/NZS 4012			

SPECIFIC FEATURES

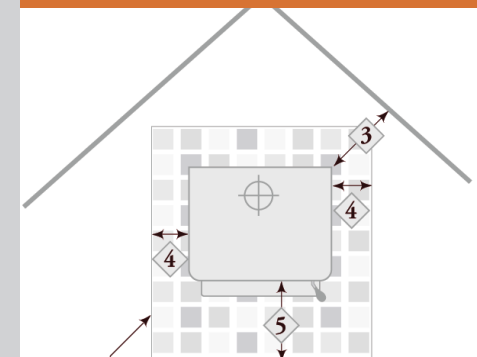
MODEL	900	1000	Soho Wood stacker	Soho Twin stacker
Exterior dimensions and weight				
Height - mm	653	800	834	836
Width - mm	581	610	540	723
Depth - mm	557	603	538	538
Weight - kg	122	119	157	157
Clearances from unit to heat sensitive material (figures 1 and 2)				
1 - Side - mm	470	350	250	250
2 - Back - mm	120	100	110	110
3 - Corner - mm	300	150	150	150
4 - Floor protection on side - mm	200	200	200	200
5 - Floor protection in front of unit - mm	350	300	300	300
Options				
Fan	Optional	Optional	Optional	Optional
Door overlay, painted black	N/A	Optional	N/A	N/A
Door overlay, brushed nickel plated	N/A	Optional	N/A	N/A
Pedestal	N/A	Optional	Standard	Standard
Legs, painted black	Standard	Optional	N/A	N/A
Louvre and trivet, black painted	N/A	N/A	N/A	N/A
Louvre and trivet, brushed nickel plated	N/A	N/A	N/A	N/A
Soapstone panel kit	N/A	N/A	N/A	N/A
Panel kit, painted black	N/A	N/A </td <td>N/A</td> <td>N/A</td>	N/A	N/A

CLEARANCES TO HEAT SENSITIVE MATERIAL



Floor protection

FIGURE 1



Floor protection

FIGURE 2

Technical data: Freestanding Wood Fires



MODEL	2000	2300	Inspire
Colour	Metallic Black	Metallic Black	Metallic Black
Combustion technology	Non-catalytic	Non-catalytic	Non-catalytic
Approximate heating capacity (Note1)	240m ²	260m ²	240m ²
Overall average efficiency (hardwood)	64%	61%	64%
Door opening size - mm - (W x H)	444 x 228	394 x 294	444 x 224
Firebox dimensions - mm - (W x H x D)	533 x 303 x 424	468 x 378 x 541	533 x 305 x 419
Emissions : weighted average, in g/kg	1.1g/kg	1.3g/kg	1.1g/kg
Glass viewing area - mm - (W x H)	438 x 240	384 x 275	499 x 302
Door frame	Cast iron	Steel	Cast iron, reversible
Maximum log length - cm	51	51.6	51
Ash drawer with safety lid	Yes	Yes	Yes
Flue size			
Glass type			
Adjustable handle			
Self-cleaning glass system			
Warranty			
Safety, emissions and efficiency testing			

SPECIFIC FEATURES

MODEL	2000	2300	Inspire
Exterior dimensions and weight			
Height - mm	883	853	883
Width - mm	686	653	689
Depth - mm	762	886	750
Weight - kg	181	204	175
Clearances from unit to heat sensitive material (figures 1 and 2)			
1 - Side - mm	400	450	40
2 - Back - mm	175	225	175
3 - Corner - mm	150	250	150
4 - Floor protection on side - mm	200	200	200
5 - Floor protection in front of unit - mm	300	300	300
Options			
Fan	Standard, Variable Speed	Standard, Variable Speed	Standard, Variable Speed
Door overlay, painted black	Optional	Optional	N/A
Door overlay, brushed nickel plated	Optional	Optional	N/A
Pedestal	Optional	Optional	Standard
Legs, painted black	Optional	Optional	N/A
Louvre and trivet, black painted	N/A	N/A	N/A
Louvre and trivet, brushed nickel plated	N/A	N/A	N/A
Soapstone panel kit	N/A	N/A	Optional
Panel kit, painted black	N/A	N/A	Optional

Note 1:

Please note heating capacity will vary home depending on each individual application. Factors such as climatic conditions and amount of insulation may alter the performance of each unit. Please speak to your local dealer for advice on the correct heater for your application.

Technical data contained in this brochure is for reference only. Any installation done must be according to the data and drawings detailed in the Owner's manual.

Technical data: Insert Wood Fires

GENERAL FEATURES

MODEL	Stratford
Colour	Metallic Black
Combustion technology	Non-catalytic
Approximate heating capacity (Note1)	240m ²
Efficiency (hardwood)	69%
Door opening size - mm - (W x H)	648 x 260
Firebox dimensions - mm - (W x H x D)	515 x 308 x 329
Emissions : weighted average, in g/kg	0.9g/kg
Glass viewing area - mm - (W x H)	638 x 286
VA10FL02 Black Metallic Finishing Trim	Optional
AC01387 Blower Fan	Optional
AC01364 Fire Screen	Optional
AC01339 Forced Air Distribution	Optional
Door frame	Steel
Maximum log length - cm	45
Flue size	150mm / 6"
Glass type	Ceramic glass
Adjustable handle	Yes
Self-cleaning glass system	Yes
Safety, emissions and efficiency testing	According to AS/NZS 4013:2019 and AS/NZS 4012

GENERAL FEATURES

MODEL	Inspire-I
Colour	Metallic Black
Combustion technology	Non-catalytic
Approximate heating capacity (Note1)	200m ²
Efficiency (hardwood)	61%
Door opening size - mm - (W x H)	508 x 211
Firebox dimensions - mm - (W x H x D)	606 x 462 x 467
Emissions : weighted average, in g/kg	0.8g/kg
Glass viewing area - mm - (W x H)	514 x 241
Door frame	Steel
Maximum log length - cm	51 cm
Flue size	150mm / 6"
Glass type	Ceramic glass
Adjustable handle	Yes
Self-cleaning glass system	Yes
Safety, emissions and efficiency testing	According to AS/NZS 4013:2019 and AS/NZS 4012

SPECIFIC FEATURES

MODEL	Stratford
Exterior dimensions and weight	
Height - mm	1122
Width - mm	1106
Depth - mm	731
Weight - kg	195
Clearances from unit to combustible materials (see figure 1)	
A- Combustible adjacent sidewall - mm	200
B- Combustible side surround - mm	200
C- Combustible top surround - mm	1130
D- Combustible mantle shelf - mm	1230
E- Minimum floor protection in front of unit - mm	500
F, G, H- Suggested fireplace opening** - mm (H x W x D)	1135 X 1120 X 658
F, G, H-Suggested fireplace opening for zero clearance application** - mm (H x W x D)	1135 X 1120 X 658
I- Maximum projection of shelf - mm	250
Finishing trim dimensions	
(VA10FL02) - mm - (H x W)	599 x 917

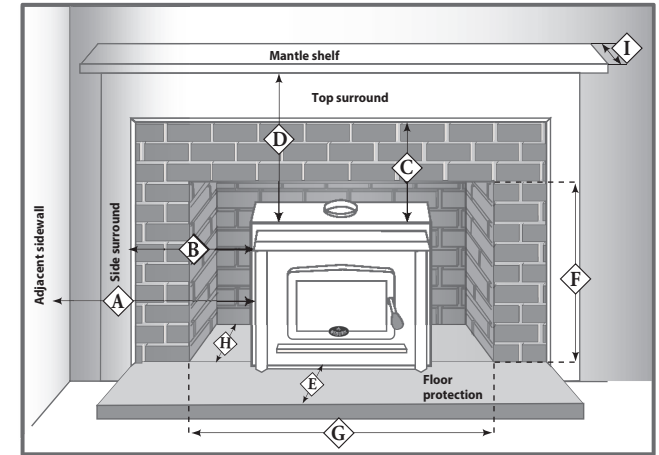
SPECIFIC FEATURES

MODEL	Inspire-I
Exterior dimensions and weight	
Height - mm	620
Width - mm	724
Depth - mm	550
Weight - kg	185
Clearances from unit to combustible materials (see figure 1)	
A- Combustible adjacent sidewall - mm	Not applicable. Not been tested
B- Combustible side surround - mm	100
C- Combustible top surround - mm	Non-combustible only
D- Combustible mantle shelf - mm	Non-combustible only
E- Minimum floor protection in front of unit - mm	700
F, G, H- Suggested fireplace opening** - mm (H x W x D)	622 x 781 x 439
F, G, H-Suggested fireplace opening for zero clearance application** - mm (HxW x D)	829 x 895 x 630
I- Maximum projection of shelf - mm	Not applicable. Non-combustible only

Figure 1

Note 1: Please note heating capacity will vary home depending on each individual application. Factors such as climatic conditions and amount of insulation may alter the performance of each unit. Please speak to your local dealer for advice on the correct heater for your application.

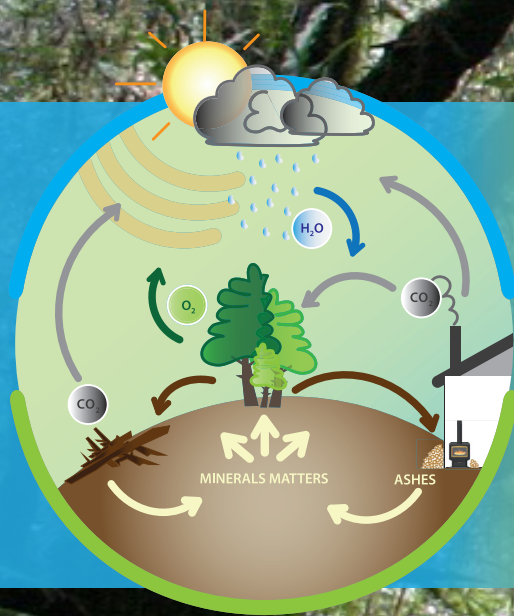
Technical data contained in this brochure is for reference only. Any installation done must be according to the data and drawings detailed in the Owner's manual.



Note 1: Fresh air intake requires 5» flexible insulated piping.



WOOD HEATING AND THE ENVIRONMENT



When oil, gas, and coal are burned, the carbon they contain is oxidized to carbon dioxide (CO_2), the main greenhouse gas. In effect, the combustion of fossil fuels releases ancient carbon (carbon that has been buried within the earth for thousands of years), thereby increasing the atmospheric concentration of carbon dioxide (CO_2). In comparison, wood combustion can be considered carbon neutral because trees absorb CO_2 as they grow. This process is called carbon sequestration.

Approximately one ton of carbon is sequestered for each cubic meter of wood. When trees mature, die, fall in the forest and decompose, the same amount of carbon is emitted as would be released if they were burned for heat. This cycle can be repeated forever without increasing atmospheric carbon. A healthy forest is not a museum, but a living community of plants and animals. When trees are used for energy, a part of the forests carbon "bank" is diverted from the natural decay and forest cycle into our homes to heat them.

When we heat with wood, we are simply tapping into the natural carbon cycle in which CO_2 flows from the atmosphere to the forest and back. The key to ecologically sound and sustainable wood energy use is to ensure that the forest remains healthy, maintains a stable level of variously aged trees and provides a good habitat for a diversity of other species, both plants and animals. Ensuring there is a healthy fuelwood market is key to a sustainable forestry plan. Landowners have more incentive to remove low value trees and manage their forests sustainably knowing there is a market for this low value material.

The combustion of wood produces small particles that are called PM2.5. Those particles are 30 times smaller than a human hair. They can aggravate certain lung and heart diseases and have been linked with health problems such as asthma. Sources of PM2.5 include combustion under various forms, such as the one used for cars and trucks, wood heating, as well as other industrial processes. While it is true that old technology like open fireplaces and simple heaters could not burn the wood completely, the new generation of wood-burning appliances are designed to burn particles. They produce almost no visible smoke. The wood heating industry has evolved. The vast majority of appliances sold on the market now meet the particles emissions limits set by the Australian Government, which has capped emissions of certified wood heating appliances to no more than 1.5g/kg. In comparison, older conventional wood appliances average 6-12g/kg. Numerous countries, provinces and municipalities, have adopted laws that regulate the sale of wood heating appliances that do not meet the latest standards in terms of particles emissions.



Wood, when burned in an appliance that has been tested to the AS/NZS 4012/4013 (2019) standards, emits up to 90% less particles. It is a clean, renewable energy source. Furthermore, the reduction in fuelwood consumption reaches up to 33% when advanced wood combustion systems are used. This is because certified wood appliances are more efficient than conventional wood fires.



**Australian
Home Heating**
Association Inc.

Osburn continues to support our industry through the Australian Home Heating Association.

The Association's charter is to provide a forum for people and organisations who share a common interest in the optimum development and self regulation of the industry relevant to solid fuel and wood heating appliances and associated accessory products to express and foster their interest in joining the Association. The AHHA co-ordinates policy formulation, development and implementation relevant to the home heating industry and consistent with the legal, technical and environmental requirements of each State and Territory in Australia.

OSBURN WARRANTY

All our Osburn fires are guaranteed for 10 years.

We warranty our fire boxes to be free from defects in material or workmanship under normal use and service. The warranty (on the firebox excluding attachments) is for 10 years from date of purchase.

*1 year warranty on all internal fire parts.



Schott Robax Ceramic Glass

The OSBURN-SCHOTT ROBAX system is one of the highest quality glass and heater product combination on the market. This allows OSBURN to offer a Limited Lifetime Warranty on Robax ceramic glass for all OSBURN appliances.

Conducted consumer studies identify that people want an unobstructed view of the fire, but without compromising safety. The glass “shield” is seen as the needed protection from the fire’s unpredictable aspects. OSBURN chose the SCHOTT ROBAX solution delivering all of the benefits that a consumer wants out of a fire but without the risks associated to it.

Because the way the entire system works together (SCHOTT ROBAX ceramic glass and OSBURN technology), it is the most efficient glass solution available in the market given its high IR transmission values and its high temperature resistance. A high IR transmission means that the heat produced inside the firebox is transferred through the glass more efficiently.

The OSBURN-SCHOTT ROBAX ceramic glass can withstand the highest temperatures of any glass on the market.

SCHOTT
ROBAX®





Proudly distributed by:



20 Auto Way

Pakenham, Victoria 3810

Tel. (03) 59415 008

E-mail: info@myfireplaceaustralia.com.au

Web: www.myfireplaceaustralia.com.au

Authorised stockist :

Notice: Some changes may have been made to the products or technical data after the publication of this brochure. Osburn reserves itself the right to modify its products at any time without any obligation.